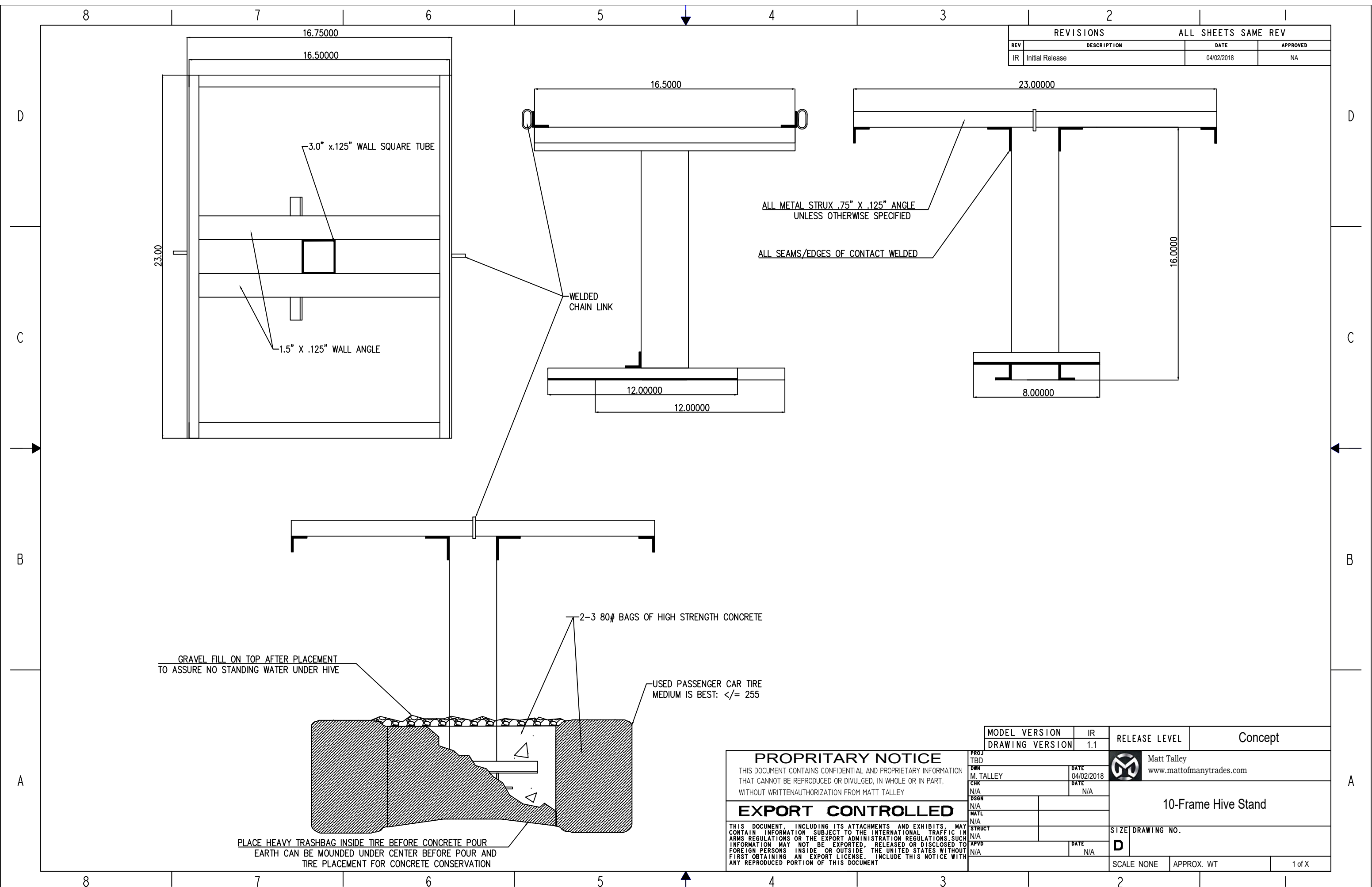


REVISIONS		ALL SHEETS SAME REV	
REV	DESCRIPTION	DATE	APPROVED
IR	Initial Release	04/02/2018	NA



GRAVEL FILL ON TOP AFTER PLACEMENT
TO ASSURE NO STANDING WATER UNDER HIVE


2-3 80# BAGS OF HIGH STRENGTH CONCRETE

USED PASSENGER CAR TIRE
MEDIUM IS BEST: </= 255

PLACE HEAVY TRASHBAG INSIDE TIRE BEFORE CONCRETE POUR
EARTH CAN BE MOUNDED UNDER CENTER BEFORE POUR AND
TIRE PLACEMENT FOR CONCRETE CONSERVATION

PROPRITARY NOTICE
THIS DOCUMENT CONTAINS CONFIDENTIAL AND PROPRIETARY INFORMATION THAT CANNOT BE REPRODUCED OR DIVULGED, IN WHOLE OR IN PART, WITHOUT WRITTEN AUTHORIZATION FROM MATT TALLEY

EXPORT CONTROLLED
THIS DOCUMENT, INCLUDING ITS ATTACHMENTS AND EXHIBITS, MAY CONTAIN INFORMATION SUBJECT TO THE INTERNATIONAL TRAFFIC IN ARMS REGULATIONS OR THE EXPORT ADMINISTRATION REGULATIONS. SUCH INFORMATION MAY NOT BE EXPORTED, RELEASED OR DISCLOSED TO FOREIGN PERSONS INSIDE OR OUTSIDE THE UNITED STATES WITHOUT FIRST OBTAINING AN EXPORT LICENSE. INCLUDE THIS NOTICE WITH ANY REPRODUCED PORTION OF THIS DOCUMENT

MODEL VERSION	IR	RELEASE LEVEL	Concept
DRAWING VERSION	1.1		
PROJ	TBD	 Matt Talley www.mattofmnytrades.com	10-Frame Hive Stand
DWN	M. TALLEY		
CHK	N/A		
DSGN	N/A		
MATL	N/A	SIZE	DRAWING NO.
STRUCY	N/A	D	
APVD	N/A	SCALE	NONE
		APPROX. WT	
			1 of X

1. THIS IS FOR A 10-FRAME LANGSTROTH HIVE. WILL BE TOO WIDE FOR AN 8-FRAME HIVE, BUT WILL WORK IN A PINCH.
2. IF YOU ARE BUYING STEEL, USE .750" X .125 WALL ANGLE EXCEPT WHERE NOTED ON THE DRAWING. THAT SAID, FREE STEEL IS THE BEST STEEL, AND ANY TYPE/SIZE CAN BE USED, INCLUDING AN OLD BEDFRAME. *SEE FIGURE A*
- 2.1. HAVE EVEN MADE THE UPPER BASE SUPPORTS OUT OF 2.0" X .250 STEEL STRAP FOUND IN JUNK PILE. *SEE FIGURE B*
3. GRIND FLAT ANY WELD BEADS THAT WILL CONTACT THE HIVE BASE. YOU NEED A FLAT SURFACE FOR THE HIVE.
4. A CHAIN LINK WELDED TO SIDE OF BASE IN MIDDLE TO PROVIDE STRAP ANCHOR POINT. USED TO KEEP HIVE SAFE IN HIGH WINDS AND FROM ANIMALS/IDIOTS. *SEE FIGURE C*
5. HEIGHT OF CENTER BASE POST CAN VARY TO YOUR TASTE. I AM 5'8" AND A BASE OF 16.0" IS MY UPPER LIMIT WITH 12.0" BETTER FOR A VERY PRODUCTIVE HIVE WITH 3+ HONEY SUPERS.
6. REINFORCING BARS AT BASE CAN BE ALMOST ANY DESIGN AND LONG AS THEY CREATE A "FOOT" FOR THE BASE. IF OUT OF SCRAP ANGLE, I LIKE USING 4, 10-12" STICKS OF REBAR AND HAVE USE SCRAPPED AXLE U-BOLTS.
7. SAND METAL SURFACES AND WIPE DOWN WELL WITH ACETONE OR PAINT STRIPPER, ALLOW TO DRY AND USE A RATTL-CAN RUST CONVERTING PRIMER. 2-3 COATS OF YOUR FAVORITE HIVE STAND COLOR, AND A COUPLE OF AUTOMOTIVE GRADE CLEAR SPRAY LACQUER WILL FINISH IT OFF.
- 7.1. YOU CAN ALSO LEAVE NATURAL TO RUST. WILL LAST 5+ YEARS, BUT WILL STAIN YOUR HIVE BODY'S AND DOESN'T MAKE YOUR BEE YARD LOOK NEAT.
8. I SOURCE USED TIRES AT TIRE CHANGE PLACES. THEY ARE HAPPY TO DONATE TO YOUR CAUSE WHEN TOLD WHAT USE WILL BE.
9. PUT GRAVEL ON TOP OF CONCRETE IN TIRE AFTER STAND PLACEMENT SO THERE IS NO STANDING WATER UNDER HIVE AFTER A RAIN. *SEE DRAWING DETAIL*
10. SET HIVE BASE IN MIDDLE OF CONCRETE. DO NOT LET BASE SIT ON AT BOTTOM. USE LEVEL TO MAKE SURE STAND IS TRUE IN BOTH X AND Y AXIS AND BRACE/CLAMP ACCORDINGLY. *SEE FIGURE D*
11. LET STAND SIT AT LEAST A WEEK BEFORE MOVING IT AND CONCRETE WILL GET TO 100% STRENGTH WITHIN 28 DAYS.
12. APPLY "TANGLE FOOT" OR AXLE GREASE TO MIDDLE OF BASE POST TO KEEP ANTS AND CRAWLY THINGS OUT OF HIVE.



FIGURE A: CUT UP BED FRAME - MAKE 2 HIVE BASES



FIGURE B:



FIGURE C: WELDED LINK DETAIL



FIGURE D: LEVELING AND SETTING HIVE FRAME IN CONCRETE

PROPRITARY NOTICE		MODEL VERSION	N/A
THIS DOCUMENT CONTAINS CONFIDENTIAL AND PROPRIETARY INFORMATION THAT CANNOT BE REPRODUCED OR DIVULGED, IN WHOLE OR IN PART, WITHOUT WRITTEN AUTHORIZATION FROM MATT TALLEY		DRAWING VERSION	1.1
EXPORT CONTROLLED		RELEASE LEVEL	Initial Release
THIS DOCUMENT, INCLUDING ITS ATTACHMENTS AND EXHIBITS, MAY CONTAIN INFORMATION SUBJECT TO THE INTERNATIONAL TRAFFIC IN ARMS REGULATIONS OR THE EXPORT ADMINISTRATION REGULATIONS. SUCH INFORMATION MAY NOT BE EXPORTED, RELEASED OR DISCLOSED TO FOREIGN PERSONS INSIDE OR OUTSIDE THE UNITED STATES WITHOUT FIRST OBTAINING AN EXPORT LICENSE. INCLUDE THIS NOTICE WITH ANY REPRODUCED PORTION OF THIS DOCUMENT		Matt Talley www.mattofmanytrades.com	
DRAWING NO.		10-Frame Hive Stand	
SCALE NONE		2 of X	